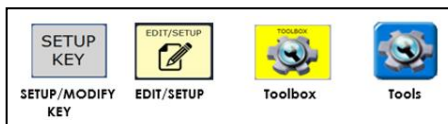



ACCENT®: Using the NuVoice™ PC Emulation Software



 Click [HERE](#) to download NuVoice PASS

Technical Support:

Tel: +44 (0)1733 370 470 (Option 2)

Email: info@liberator.co.uk

Regional AAC Consultants:

If you wish to speak to your Regional AAC Consultant, please call +44 (0)1733 370 470 (Option 3)

The Accent NuVoice PC Emulation software, also known as **PASS**, is demo software for the Accent range of devices that allows you to:

- Create, modify, and save vocabularies, then load them into your communication device.
- Create support materials, such as smart charts, manual boards, and vocabulary lists.
- Allows AAC support professionals and family members to practice or work on a client's device

contents without needing to have the device present.

Using the NuVoice PASS software is almost identical to using an Accent. However, there are a few differences and some other features. This Quick Reference Guide covers PASS-related topics that are not covered in the Accent Quick Reference Guides and other language system support materials.

If you want to do general programming refer to the Accent quick reference guides. NuVoice PASS software will program the same way.

Individual quick reference guides have been made for:

- *Creating Smart Charts*
- *Using Vocabulary Builder*
- *Importing and Saving Vocabularies*

Installing an Embedded Vocabulary (e.g. *easyChat® Phrases 45, Essence 60, etc.*)

1. Select **TOOLS > TOOLBOX > VOCABULARY OPTIONS > REPLACE VOCABULARY.**
2. Select a User Area (1-6) that you want to replace with a vocabulary.
3. Select the desired vocabulary (e.g. **easyChat**, **Essence**, **Unity®**, etc.) folder.
4. Select the desired vocabulary version (e.g. **Core**, **Phrases**, etc. if **easyChat**) and location size (e.g. 36, 45, 60...).
5. By selecting **Yes**, the current user area will be erased and replaced with your desired vocabulary. Type the word "**replace**". Select **OK**.
6. Once complete, if prompted answer **YES** "Switch to this user area now?". Select **OK** and then **GOTO HOME**.

Adding a New Product Configuration (i.e. **ALL USER AREAS WILL contain various versions of a selected vocabulary**)

1. Select **TOOLS > TOOLBOX > ADVANCED SETTINGS.**
2. Select **CHANGE PRODUCT CONFIGURATION.**
3. Select your desired product configuration (e.g. **easyChat Core Symbol Stix**). All six current user areas will be erased and replaced.
4. Select **YES** to confirm the replacement.
5. You may use the vocabulary being displayed or go to the **VOCABULARY OPTIONS** to select the desired vocabulary.

Saving a Vocabulary on a Device or into PASS

1. Insert your flash drive into the USB port on the back of the device or computer (for PASS).
2. Select **TOOLS > TOOLBOX > IMPORT/SAVE.**
3. Select **SAVE A VOCABULARY** and select the user area you want to back up, or **SAVE ALL VOCABULARIES** to save all NuVoice settings.
4. Make sure the pre-set folder is a USB drive. If so, select **OK**. If not, select **CHOOSE ANOTHER FOLDER** and navigate to the USB drive (select **CHOOSE ANOTHER FOLDER** again until you see the USB drive if needed). Select **OK**. Type the file name and date (e.g. Client NameDDMMYY).
5. Select **OK** and wait for the transfer to take place. Once complete, select **OK, OK**, and then **GOTO HOME**.

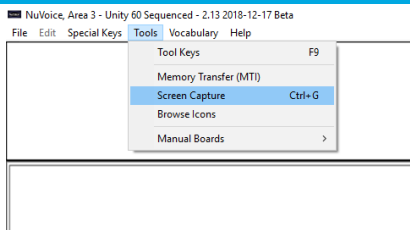
Loading a vocabulary

1. Insert your USB stick to the USB port on your device or computer (for PASS).
2. Select **TOOLS > TOOLBOX > IMPORT/SAVE.**
 - a) Select **IMPORT A VOCABULARY** and select the user area (1-6) you want to load the vocabulary into. Please note, the existing user area will be erased/replaced with the new one.
 - b) Select **IMPORT ALL VOCABULARIES** if you are loading a file that contains the entire contents of a device.
3. If you see the file you want to load already on the screen, select it. Otherwise use **CHOOSE ANOTHER FOLDER** to navigate to the USB flash drive. Select the file you want to load.
4. Wait for the transfer to take place. Once complete, select **OK**. Answer **YES** or **NO** to "Switch to this user area now?".
5. Select **OK, OK**, and then **GOTO HOME**.

Screen Capture

Use the Screen Capture tool to take a snapshot of any screen and print it so you can use it as a low-tech communication board.

1. Go to the screen you want to print.
2. Select the **TOOLS** menu.
3. Select **SCREEN CAPTURE**.



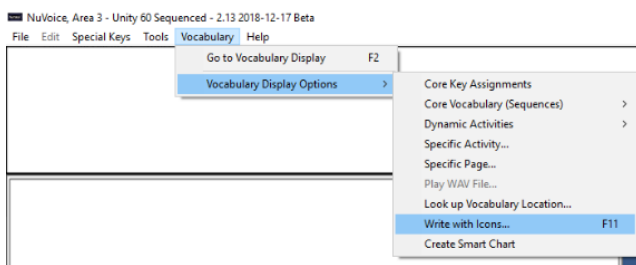
- Name your file and choose where you want the file saved on your computer.
- Select **SAVE**.
- You will now see a picture editing software open with your page displayed.
- Format and print.

Write with Icons - For UNITY, LLL AND LAMP WFL ONLY

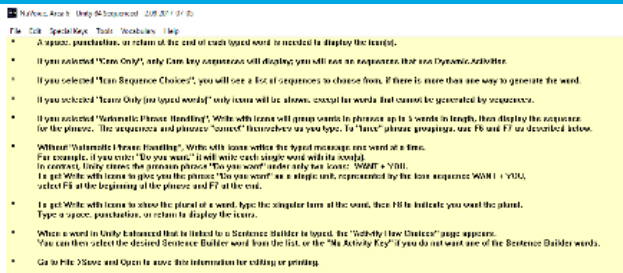
Write with Icons allows you to type words and see them displayed as icon sequences.

People use Write with Icons to make support materials such as flash cards, target vocabulary lists, and adapted classroom materials.

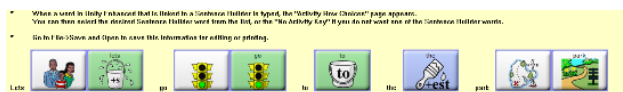
- Select the **Vocabulary Tab**.
- Select **Vocabulary Display Options**.
- Select **Write with Icons (F11)**.



NOTE: If this is your first time using NuVoice PASS, you will see a WWI setup screen. You can use this to change how WWI works (see WWI Preferences). To skip this screen in the future, uncheck the box marked "Show set-up at Write with Icons start-up". Select OK. The display will change to a tan background with WWI instructions on the top of the screen.



Now whatever you type will show up on the display with icon sequences. You must type a word and then add a space, tab, return, or punctuation after it to display the icon sequences.



To format and print your words and icon sequences, select **FILE**, then **SAVE AND OPEN**. Name your file and designate where you want the file saved on your computer. Then select Save. Your words and icon sequences will open in a text document. Format and print. To stop using WWI, select Vocabulary and then Return to Emulator.

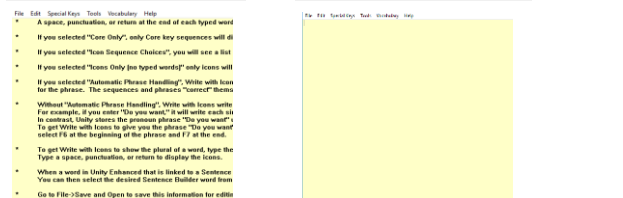
Write with Icons Preferences

To change WWI options, go to the **FILE** menu and select **PREFERENCES**.

Instructions on Page:

Instructions on page

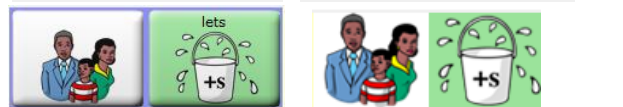
Instructions on page



Icon on Key Background:

Icon on Key Background

Icon on Key Background



Icons Only (no typed words):

Icons Only (no typed words) Icons Only (no typed words)



Icon Sequence Choices:

With Icon Sequence Choices **ON**, you will be given choices if there is more than one way to say a word.

Click on the sequence you want, and then select **OK**. With Icon Sequence Choices **OFF**, you will get the first choice on the list.

Automatic Phrase Handling:

With Automatic Phrase Handling **OFF**, each word will show its sequence.

Automatic phrase handling



With automatic phrase Handling **ON**, the shortcut phrases will be displayed.

Automatic phrase handling

