

NOVACHAT: TRANSFERRING VOCABULARIES VIA CHAT EDITOR

NOTE: Ensure that Chat Editor on your PC/Laptop and NovaChat on the device are both running the same version (update both if necessary).

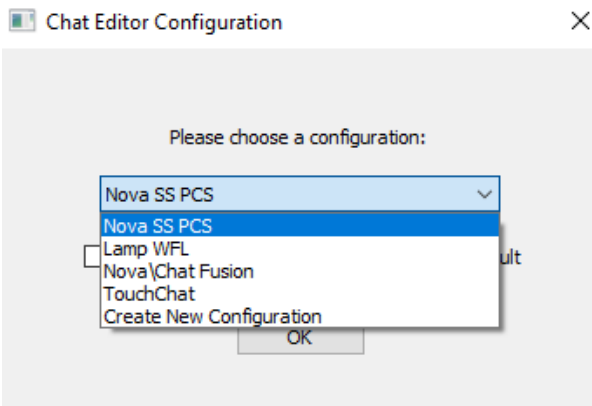
 Click [HERE](#) to download Chat Editor

Transferring To/From Device

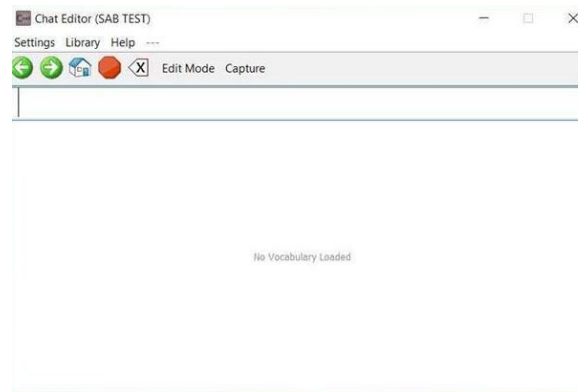
Connect the device to your PC using the USB cable.

1. Open Chat Editor on your PC/Laptop. Choose which configuration you need to use. If you do not have a configuration already set, use one of the following:

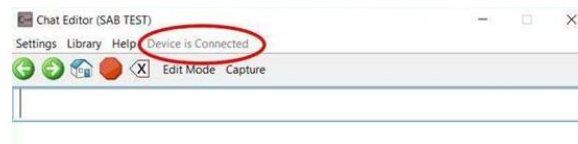
- For LAMP WFL devices/vocabularies choose Lamp WFL
- For Chat software/Chat Fusion devices choose Nova\Chat Fusion
- For TouchChat devices choose TouchChat



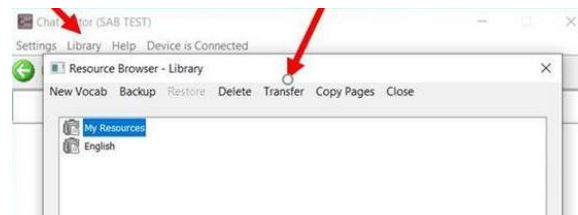
2. Chat Editor will now launch.



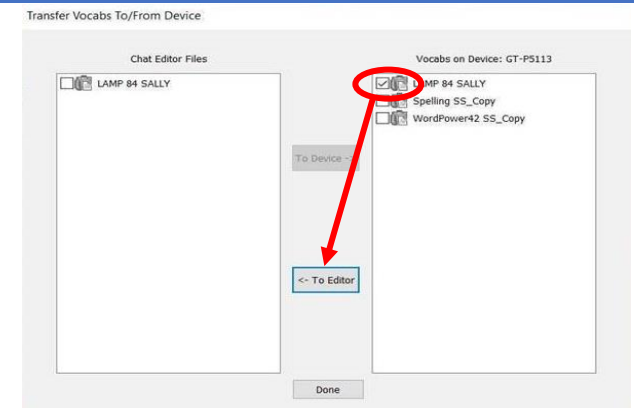
3. Connect the device you wish to take a copy of the vocabulary from. You will then see "Device is Connected" as shown below.



4. Select **Library** from the top menu and then select **Transfer > Vocab To/From Device**.



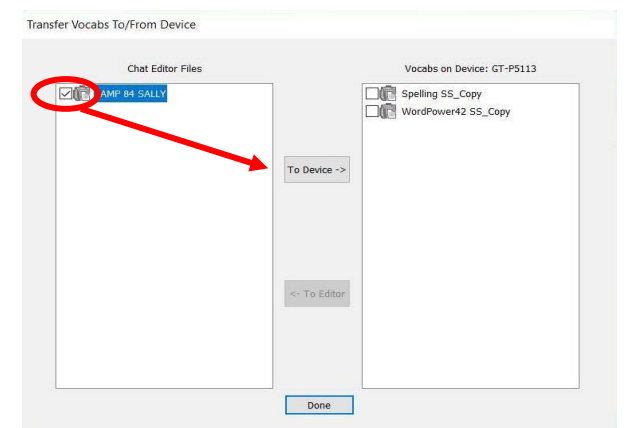
5. Under **Vocab on Device** check-mark the vocabulary you wish to transfer, then select **<- To Editor**. The vocabulary will transfer from the device to Chat Editor. Select **Done** once complete.



6. To transfer the vocabulary back to the device launch Chat Editor and connect the device to your PC/Laptop (if not already open & connected).

7. Select **Library** from the top menu and then select **Transfer > Vocab To/From Device**.

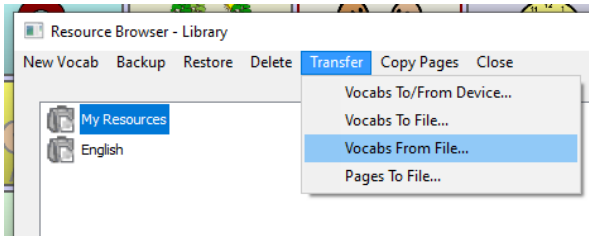
8. Under **Chat Editor Files** check-mark the vocabulary you wish to transfer, then select **To Device ->**. The vocabulary will transfer from Chat Editor back to the device. Select **Done** once complete.



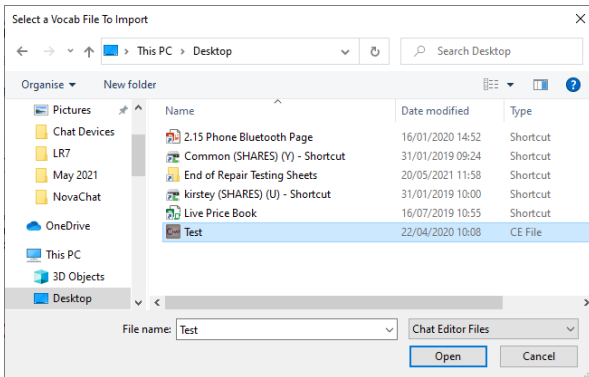
Importing Files to Chat Editor from a PC or Laptop

In version 2.31 of the Chat Editor software, vocabulary files (ending with .ce) saved on your PC or Laptop can now be imported directly into Chat Editor.

1. To import your vocabulary (.ce) file open Chat Editor and click **Library > Transfer > Vocab From File...**



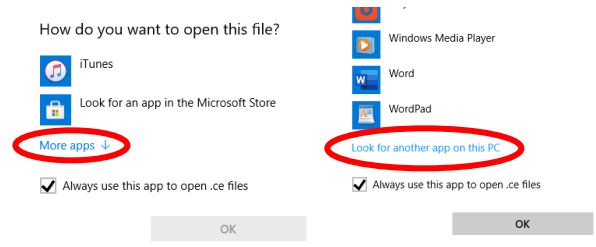
2. Navigate to where your vocabulary file is saved, select the vocabulary file, then click **Open**.



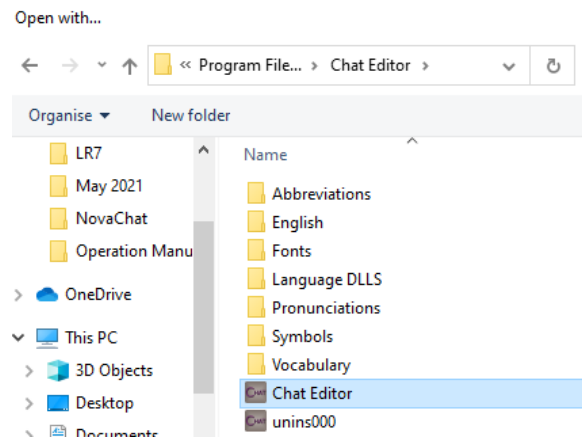
3. Your vocabulary file will now import into Chat Editor and you will see your file in the **My Resources** list in Library. You can now open this if you wish to edit your vocabulary.

Another way to import your vocabulary is to navigate to where your .ce file is saved.

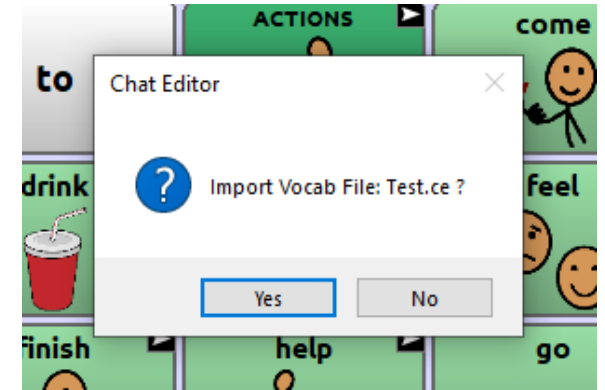
1. Double-click the file to open it.
 - a. Follow steps 2-5 below if opening the vocabulary for the first time since updating, or
 - b. continue from step 4.
2. Click **More apps**, scroll down the list and click **Look for another app on this PC**. Ensure that the **Always use this app...** box is ticked.



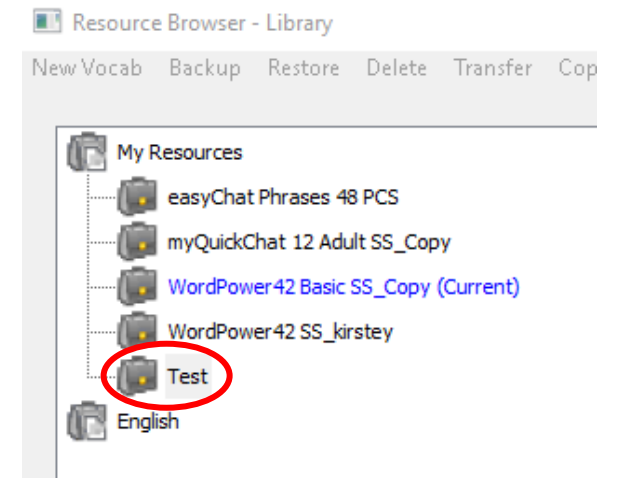
3. In the next box you will need to navigate to **Program Files > Chat Editor**, click on the Chat Editor program and click **Open**. If you don't see the Chat Editor folder in Program Files, then go up a level and select the folder **Program Files (x86)**.



4. Chat Editor will now open, and you will be prompted to import your file. Click **Yes**.



5. Select the configuration needed for the file and this will start the import. Once the file has imported click **Library > My Resources** and you will see your imported file in the list. You can now open this if you wish to edit your vocabulary.



Note: If you already have Chat Editor open you can either double-click your vocabulary (.ce) file or drag and drop the file into Chat Editor and follow on from step 4 above.